

Smoke alarms

By law, all residential properties in Victoria must have at least one smoke alarm installed on each level.

MFB and CFA recommend photoelectric smoke alarms with a 10-year lithium battery in a tamper proof chamber.

- Photoelectric smoke alarms are more effective and less prone to false alarms.
- They can be standalone (not connected to 240v mains power) or hard-wired (connected to 240v mains power).



Test Monthly

- Press the button
- Hold until the alarm beeps three times



Dust Annually

- Dust or gently wipe around cover of smoke alarm
- * If applicable, replace your smoke alarm battery annually



Replace Every 10 Years

- All smoke alarms (hard-wired and standalone) need to be replaced



Where do I install my smoke alarm?

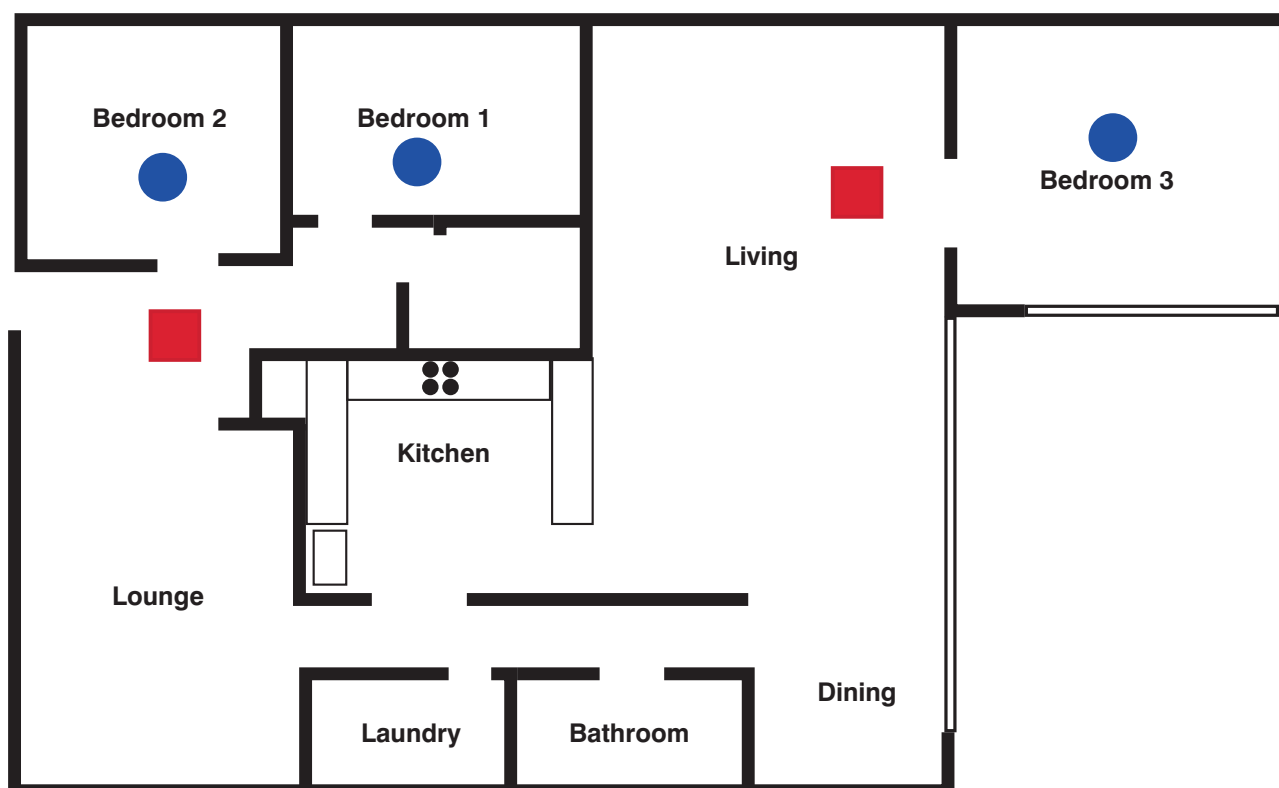
- Smoke alarms should be installed on the ceiling at least 30cm from the wall.
- Smoke alarms must be between each sleeping area and the rest of the house.
- Smoke alarms should be inside any room where someone sleeps with the door shut.
- Smoke alarms must meet Australian Standard AS3786.



Must be located between sleeping areas and the rest of the house



Additional places you may install a smoke alarm to provide additional protection



For more Fire Safety information visit mfb.vic.gov.au | cfa.vic.gov.au